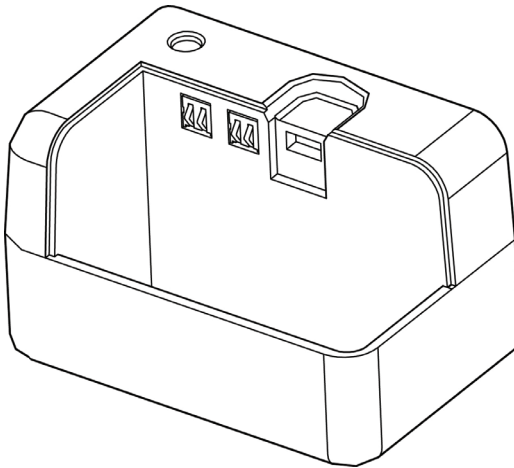




Battery Holder S300/S400

User's Manual



STAR MICRONICS CO., LTD.

536 Nanatsushinya, Shimizuku,
Shizuoka, 424-0066 Japan

Tel:(int+81)-54-347-0112

Fax:(int+81)-54-347-0409

◆ Information

This manual contains operating instructions and important safety guidelines. The Battery Holder S300/S400 is designed to charge only the Lithium-Ion battery pack compatible with the SM-S300 and SM-S400 Portable Printers.

The contents of this manual are subject to change without prior notice.

◆ Suitable Environment for the Use of the Battery Holder is as Follows:

1. Operation Temperature : 0 °C to 40 °C (No Condensation)
2. Storage Temperature : -30 °C to 85 °C
3. Relative humidity : 5% to 95% (No Condensation)
4. Altitude : 0 ~ 10,000 feet
5. Cooling : Convectonal (Non-Vented Case)

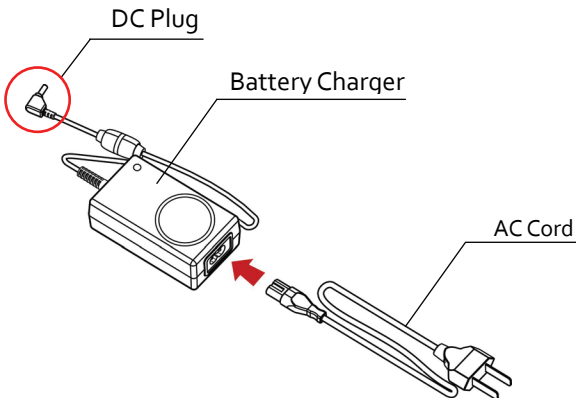
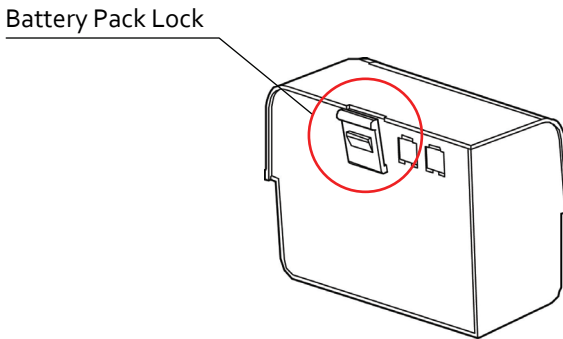
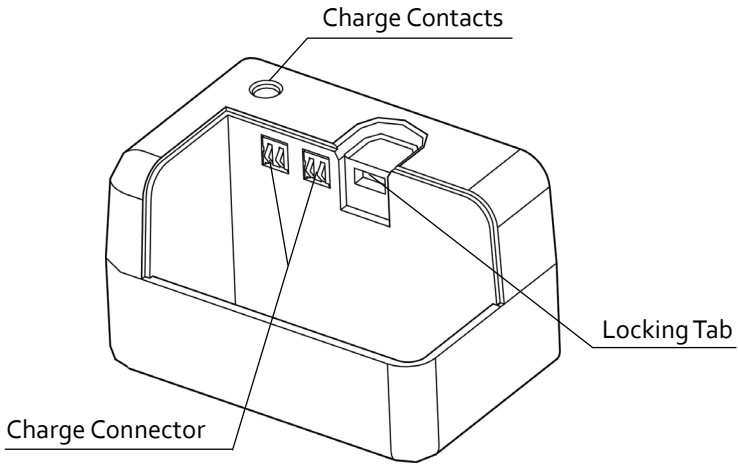
◆ Warning / Safety Guidelines

- Keep the charger in a cool, dry place, away from direct sunlight, high temperature, and moisture.
- Do not insert foreign objects into the charger.
- Do not operate the charger if it appears damaged.
- Do not disassemble, incinerate, or short circuit batteries, the charger, or related components.
- Do not operate the charger when your hands or body are wet.
- Do not operate the charger near water.
- To reduce the risk of electric shock, unplug the charger before cleaning.
- This charger cannot be used for any other types of batteries.
- Use of any charger not approved for the SM-S300 and SM-S400 Series can damage the batteries or the printer and will void the warranty.

◆ General Guidelines

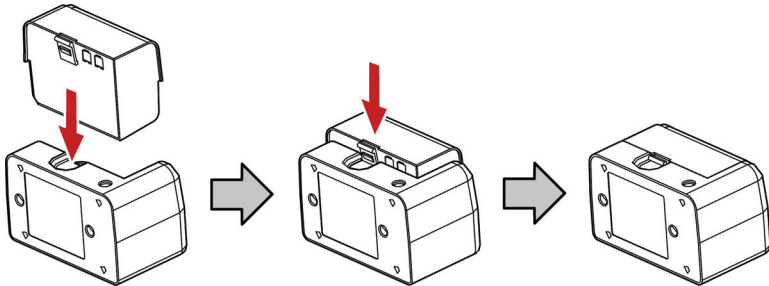
- The recharging time depends on the voltage level and ambient temperature of the battery. Normally, it takes about four (4) to five (5) hours to completely recharge one battery pack.
- The battery is a consumable part that will gradually lose its lifespan over time, depending on the total number of usage hours. Batteries approved for use with the SM-S300 and SM-S400 carry a standard warranty of six (6) months.

■ S300/S400 Parts Breakdown

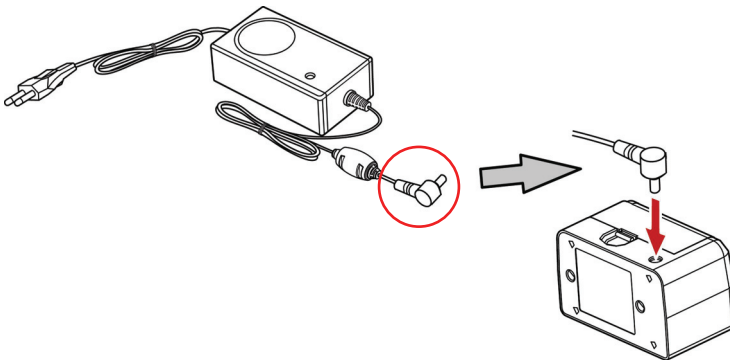


■ Using the Battery Holder S300/S400

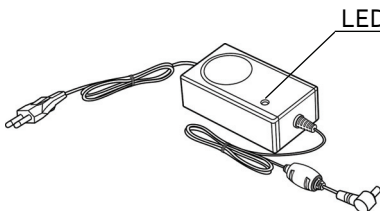
1. To install battery pack, proceed as follows:
 - Insert the battery pack in the direction of the colored arrow.



2. To recharge the battery, install the battery pack in the Battery Holder S300/S400. Insert the DC Plug into the charge connector and plug the AC Cord into a power outlet.



3. The S300/S400 Series Battery Pack will begin the charge cycle.



LED Indicators

- 1.Red LED ON: Charging
- 2.Green LED ON: Fully Charged
- 3.OFF:Battery Unloaded or Voltage Overload

NOTE: Only use the AC Cord approved for the SM-S300 and SM-S400. Usage of any other cord can damage the printer, battery, or battery pack and will void the warranty.